

one to one architecture and design 1:1

Portfolio

one to one
architecture and design

A design studio dedicated to conceptual architecture, interior design and furniture design.

We introduce a holistic approach that goes beyond the architectural design to provide a conscious mix between art, architecture and psychology...



About

1:1, One to One architecture and design is an award winning design studio based in Bahrain.

Founded in 2012, the studio has established reputation for delivering spaces designed with sensitivity and skill.

1:1, One to One architecture and design has been involved in providing conceptual architectural and design services for a big range of high-profile projects: cultural, commercial, residential, hospitality and master planning projects for major clients such as Ministry Of Culture, Supreme Council for Women, and Bahrain Development Bank, Seef properties.



Philosophy

1:1, One to One architecture and design is defined by a flexible approach that allows for, and accommodates, changes over lifespan of a city.

We believe that designed spaces should evoke cultural transformation through promoting interaction within a community, and between people and their context.

We study the psychological impact spaces have on their inhabitants and design peoples' emotions through architecture, addressing the double-sided conversation between space and inhabitants.

This is our philosophy in maintaining cultural continuity and integration through the built environment, to create spaces that reflect people, emerge from their context and foster societies.

1:1



Hassan Akbar
Architect Wannabe



Vincent Tse
Architect



Maysam Alnasser
Architect



Maryam Folath
Architect



Bushra Rajab
Architect

Meet The Team

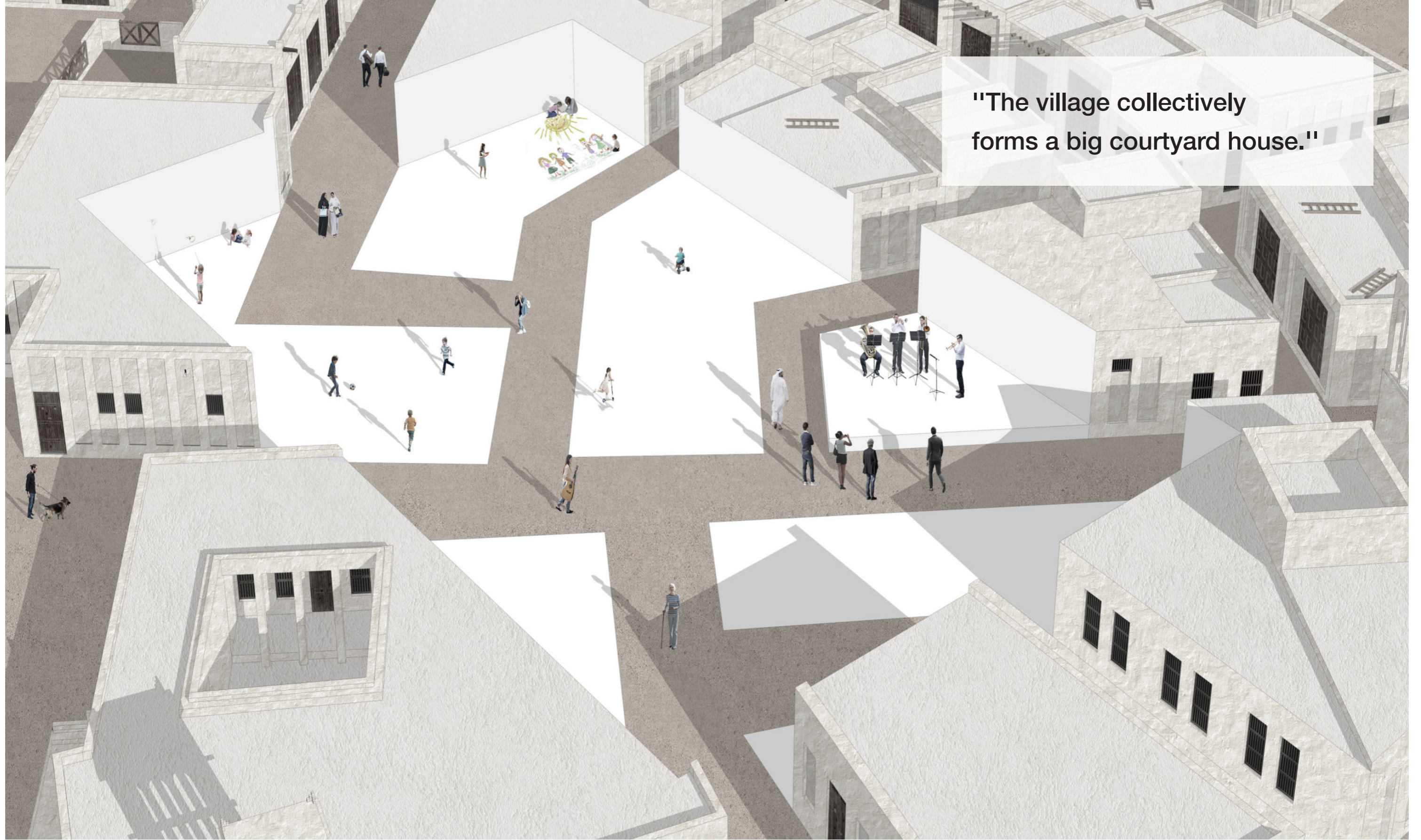
Our design team is comprised of talented designers who are CRPEP Licensed Architects. The combination of our individual skills is a key strength of the 1:1 team and allows us to respond to a wide variety of design challenges. We come to the table with extensive research, unique solutions, sense of humor and a cup of tea.

A family you become a part of.....

Urban Design

Designed spaces that not only reflect culture, but evoke its transformation, through promoting interaction within a community, and between people and their context.

This is our philosophy in maintaining cultural continuity and integration through the built environment, to create spaces that reflect people, emerge from their context and foster societies.



"The village collectively forms a big courtyard house."

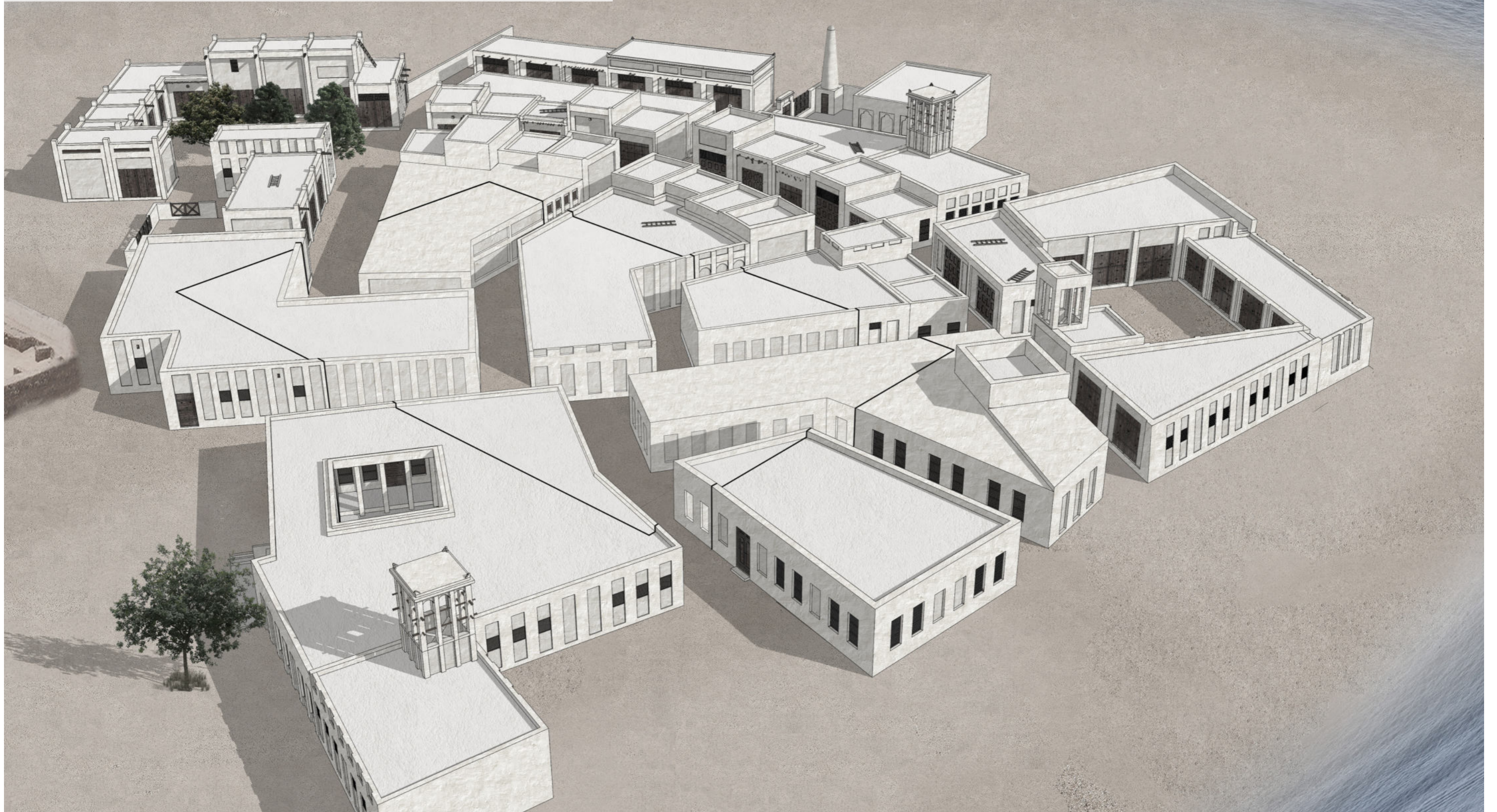
The “village” imitating the “house”

Bahrain 2014 | Ministry of Culture

The proposal re-creates the village formation; the built-form pattern is taken from the organic growth of a traditional urban fabric. The village collectively forms a big courtyard house..

A square is cut into the village fabric, to mimic a vast courtyard house, creating a centre, HUB, where most activities take place.

The proposal re-creates the village formation from the organic growth of a traditional urban fabric. A square is cut into the built-form, creating central HUB, where most activities take place, and radiates from it to the alleys of the village...





Proposal for the Heritage village | Urban







The Dhow village

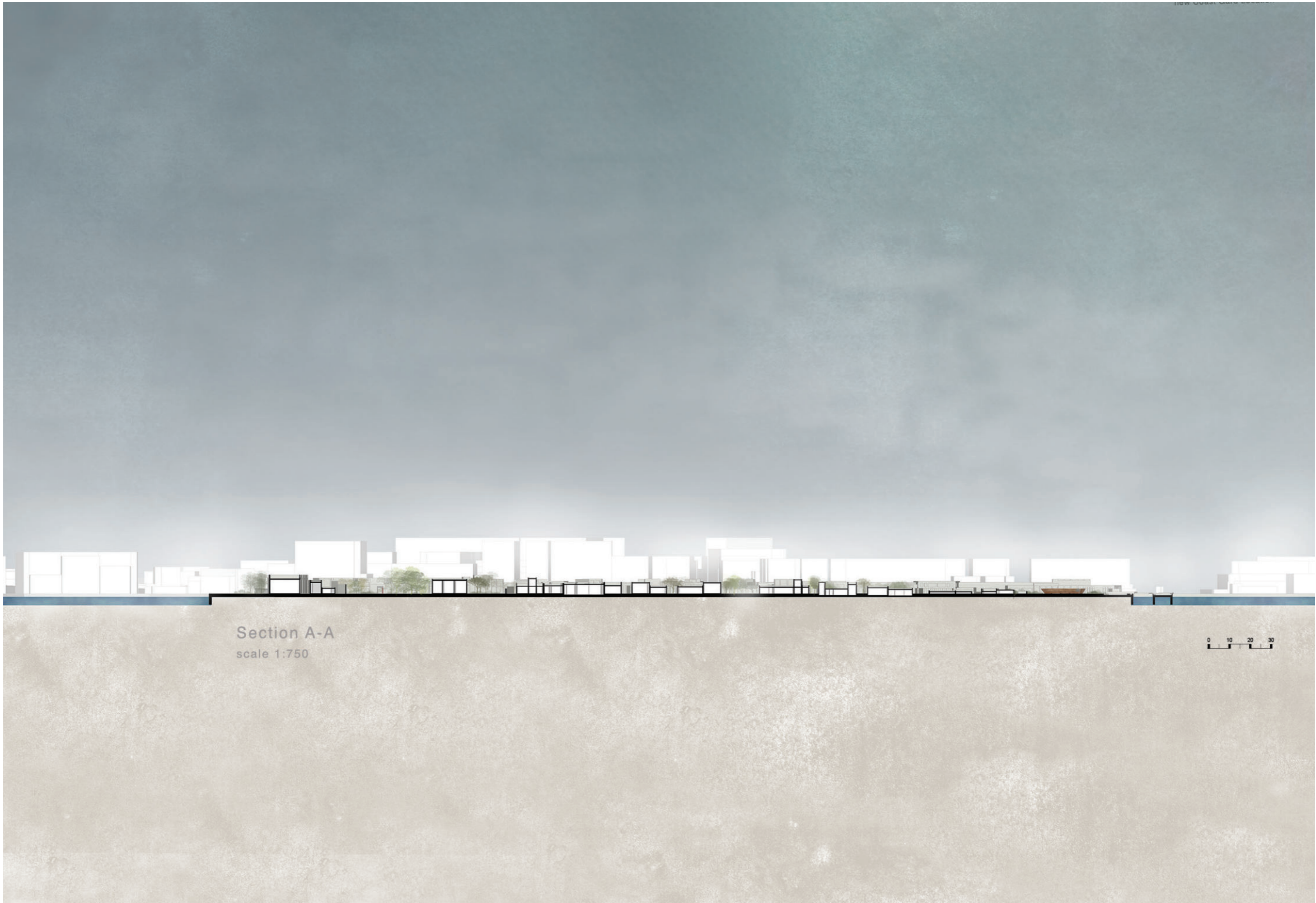
Bahrain 2020 | Ministry of Works

For this scheme we are proposing wide sea connection between hotels and landmarks at the edge of the water like historic, cultural, environmental and tourist destinations around the island to promote synergy between the points and better **integrate them with the fabric of the city.**

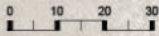
Those connections shed light on important environmental locations and create awareness like the mangroves and locations related to bird migration routes.



The site spans between Bu Maher fort and Sa'ada project, creating pedestrian connection to the rest of the pearling path journey, and offers sea connections to important landmarks at the edge of the water.



Section A-A
scale 1:750



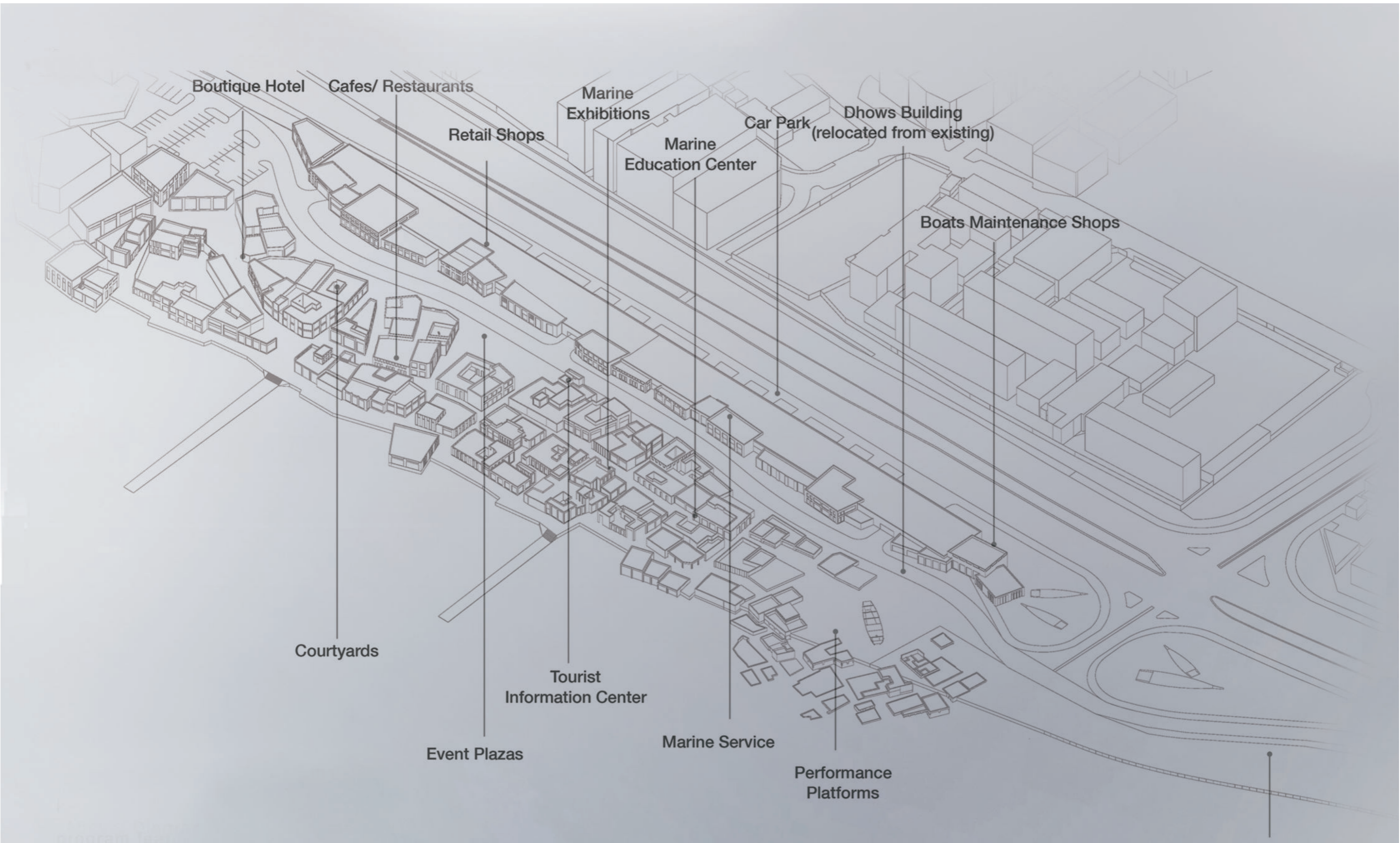


Diagram showing the main Program features of the project

To Commercial Beach and Water Sports

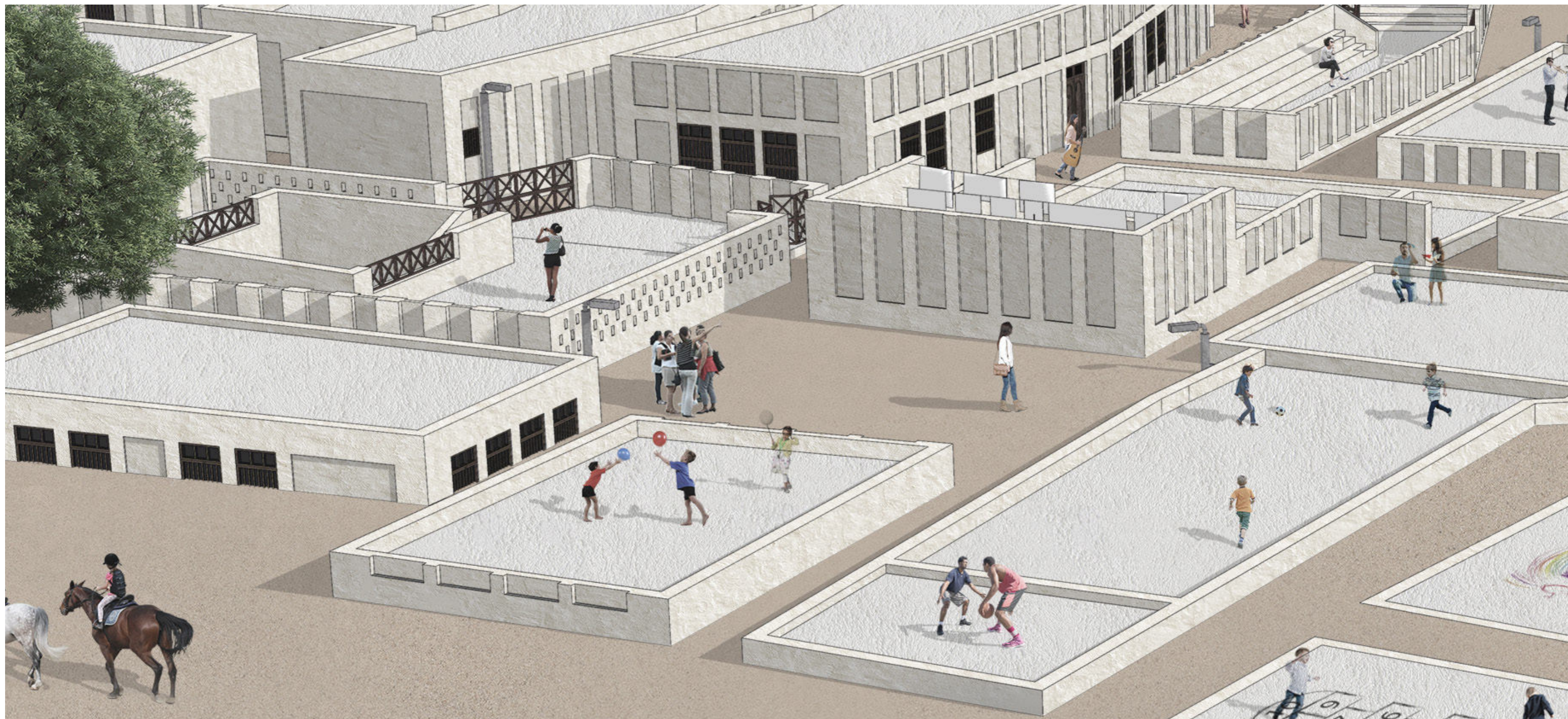
The pedestrian-friendly road leading to the carpark and Saada project flows organically through the built form, and is treated to slow the traffic, with wooden bollards stopping vehicles from going deeper in the project.





Fully pedestrianized alleys between the built form promoting inclusivity. Green pockets spread to provide required shade to allow activities to spill to the outdoor space, street art and street music to bring live to public spaces.



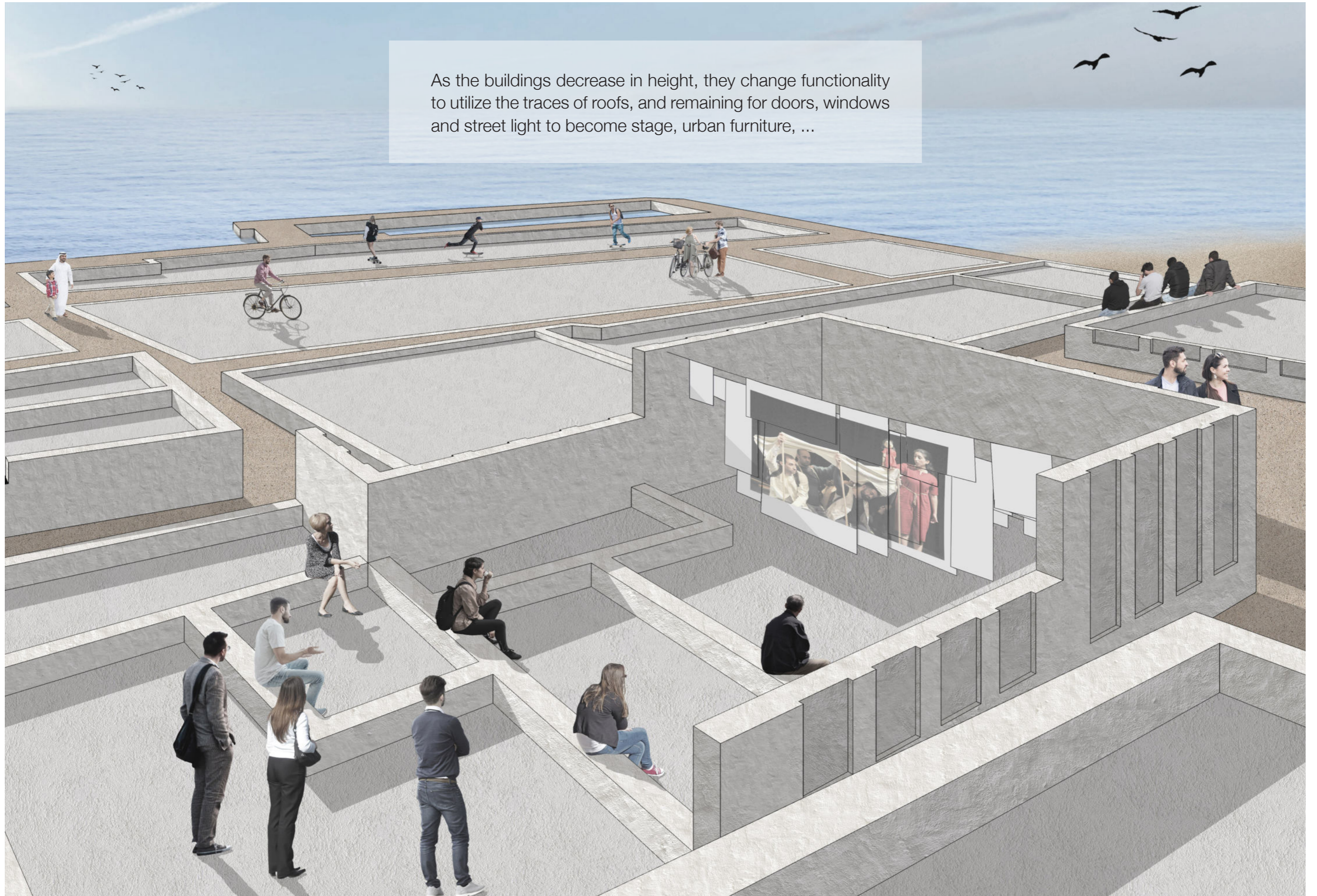


The contemporary interpretation of the “village” submerges the buildings gradually into sand and water towards Bu Maher fort, in a visual illusion that plays on obscuring the boundary between sea and land.

As the buildings decrease in height, they change functionality to utilize the traces of roofs, and remaining for doors, windows and street light to become stage, urban furniture, ... Celebrating the movement of the tides, appearing and disappearing depending on time, to integrate the water into the design...



As the buildings decrease in height, they change functionality to utilize the traces of roofs, and remaining for doors, windows and street light to become stage, urban furniture, ...



Those traces of buildings celebrate the movement of the tides, appear and disappear depending on time, to integrate the water into the design, reviving the memory of the old shore houses as they get washed by the sea as it enters the courtyards...



Architecture

Profound dialogues informs a unique architecture

Every architecture project is an intimate friendship. We encourage dialogues, care about the told and the untold, the tangible and the intangible, and transform them into a unique multi-sensory experiences.



Farmers Market

Bahrain Development Bank 2018
1500 sq.m | Architecture

The project aims create an immersive experience centered around farming and local, fresh produce, through a holistic approach that aims to include the farmers, suppliers, consumers and younger generations. The project offers a place for farmers to grow their products, sell them, and create collaborations opportunities for them with F&B vendors within the premises.

The warehouse is clad with corrugated steel, with wooden cut-outs through the form inviting people and nature in.



Wooden cut-outs through the steel-cladded warehouse exposing the internal finishes of the market, and inviting people and the garden in.

















Villa Jerdab

240 sq.m | Architecture

Each project carries a special place in our heart, but this one is so dear to us. Because of the small size of land, this project carried so many challenges that helped us articulate a very unique house.

Characterized with an elevated courtyard, multiple mezzanines, skylights and a vertical nature. A silent, and serene exterior with minimal materials allows the nature that seeps through the terrace to do the talking.



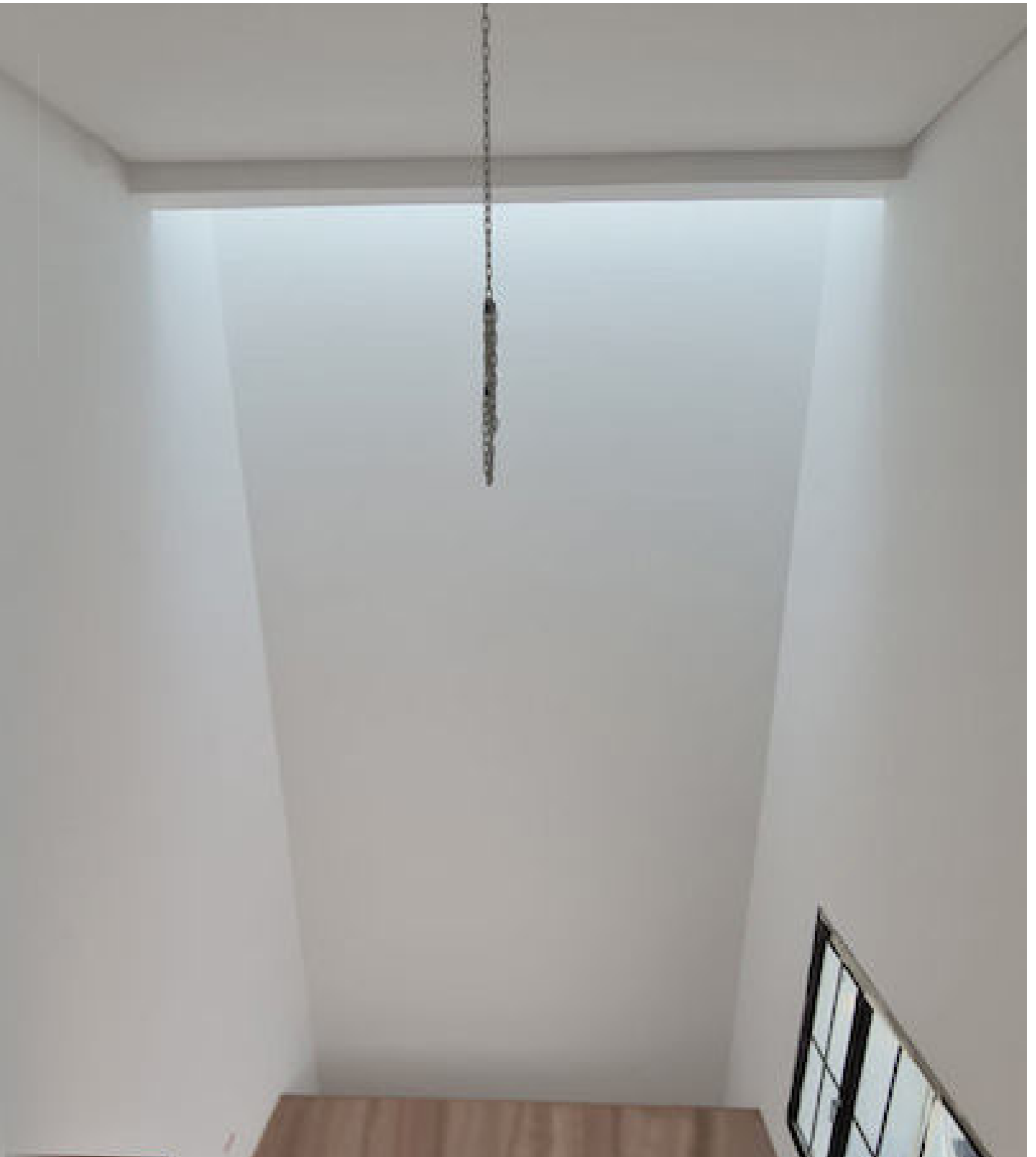
Elevated courtyard and skylights

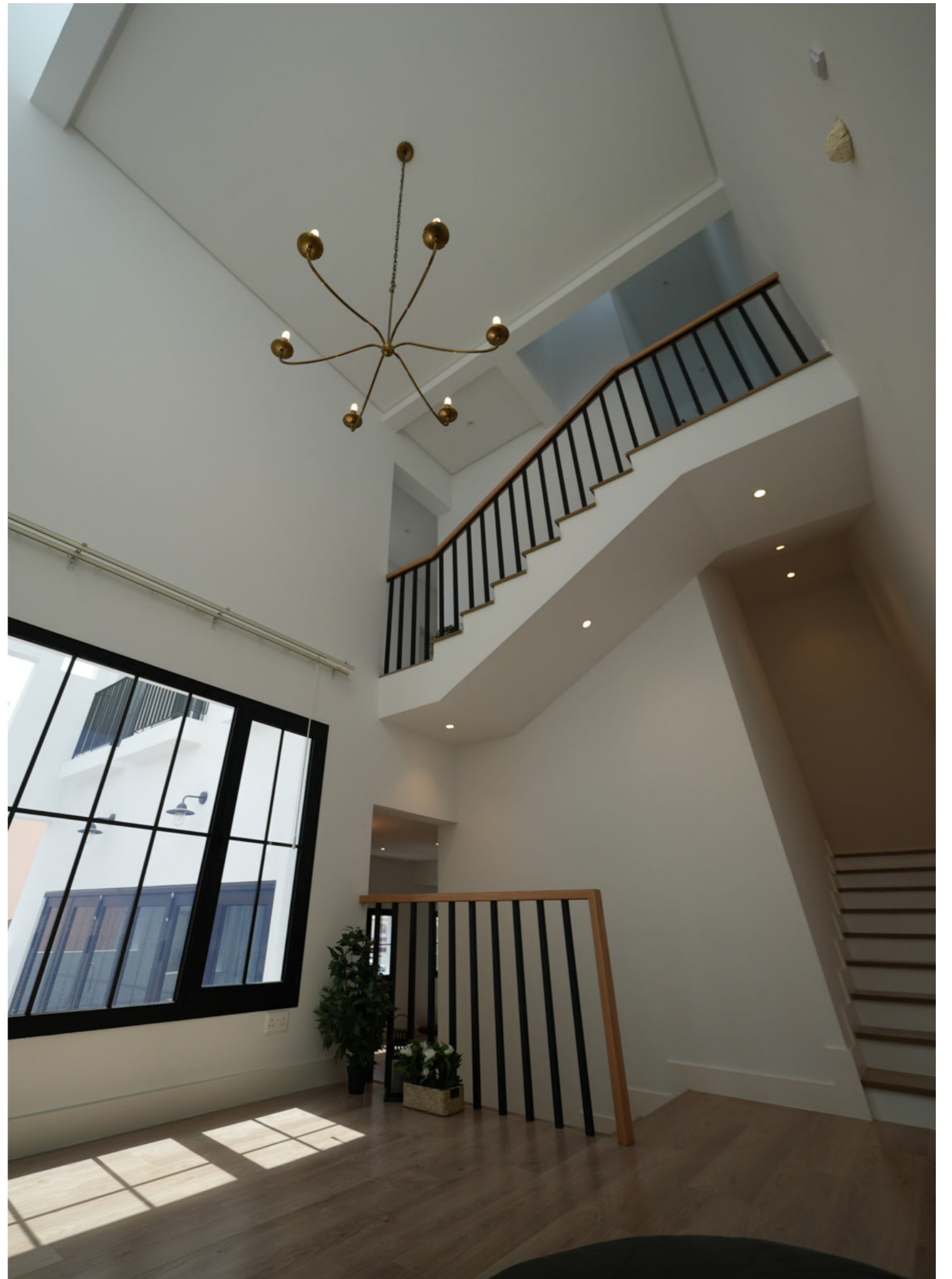
A silent, and serene exterior
with minimal materials
allows nature to seep
through to the terrace

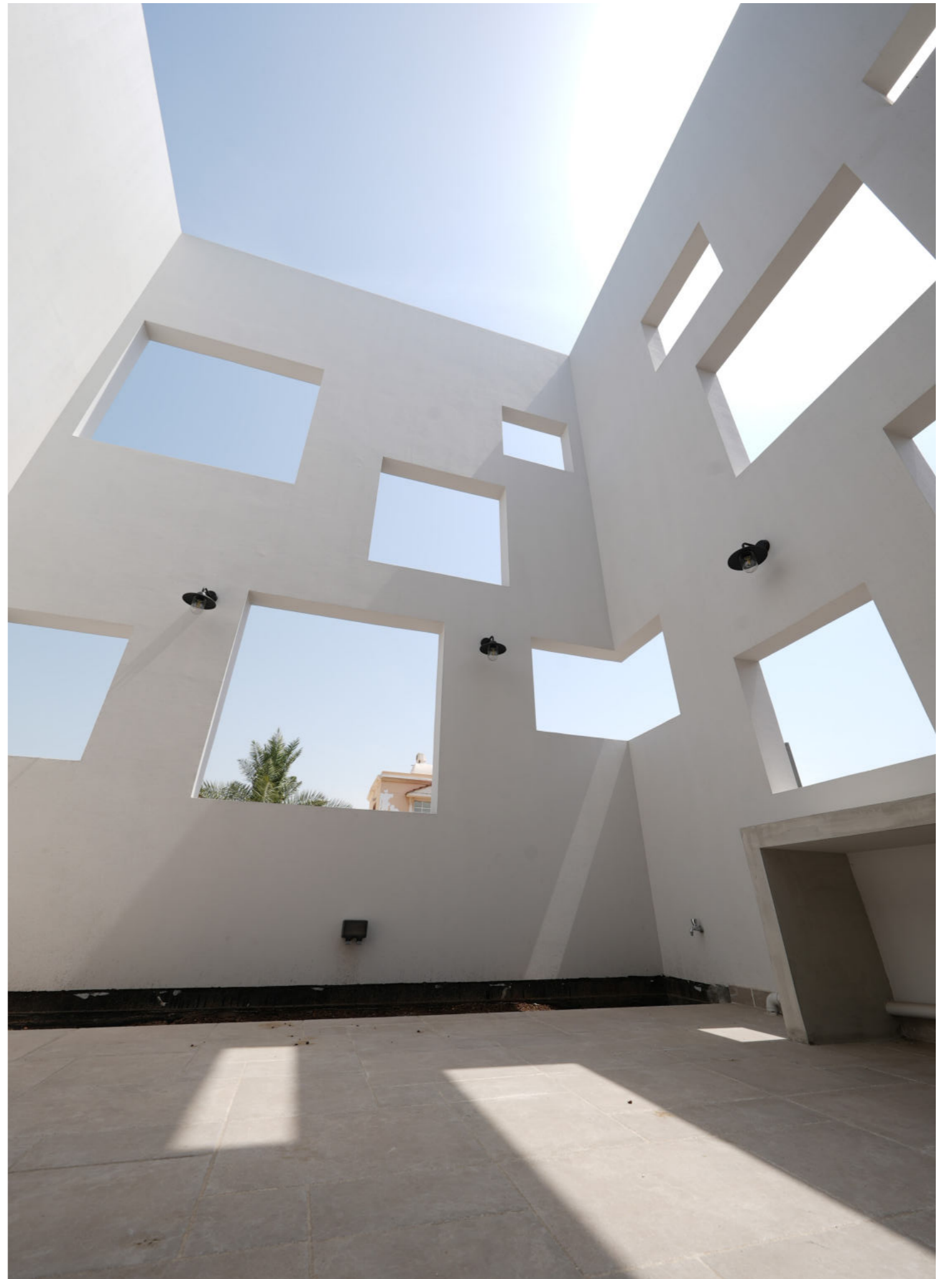


**Multiple mezzanines, skylights
and an indoor growing tree**

Concious mix of light and nature









Villa Saar I

430 sq.m | Architecture

A musician and a yogi/artist, the friendliest couple, and a villa designed specifically to reflect their welcoming warm hearts and creative selves.

Play on levels
Creates cosy spaces & smooth flow











Cottage Renovation

Spain | Architecture

When we were asked to design and restore this remote holiday house, we did not come with a design plan, we wanted to analyze the house and react to it.

The house was built in the 1900. We wanted the age of the house to be present internally, so we approached the design with the intention of framing its essence and the surrounding beauty. Cautiously we introduced new materials while exposing the existing, to compliment and maintain the historical characteristics of the space.















Brick House

Pakistan | Architecture

A minimal design that responds to social restrictions, local materials and weather conditions.

The courtyard house with perforated brick walls create natural ventilation while maintaining the required privacy, with an inverted garden and inward looking views.







Villa Saar II

430 sq.m | Architecture

The project is inspired by our extraordinary clients, a yoga instructor and a musician.

While the inside is full of exploration and playfulness, the Façade channels silence and poise, which brings full attention to the entrance core... through which, a glimpse of the internal life spills out..



















Villa West Riffa

1500 sqm | Architecture

This house is a contemporary interpretation of the courtyard house.. The enclosed courtyard form is abstracted and unfolded in linear manner, the traditional shaded colonnade faces the garden and swimming pool..

With pockets of greenery clearly dividing the public and private areas, the circulation of the house flows elegantly, led by the external landscape..























Villa Saar III

430 sq.m | Architecture

An academic and an athlete, with their focus on the minimal important things.

A small land with so much potential. We channel the most important things for our clients first. And then, we articulate the experience, views, and details around these spaces.







Villa Samaheej

500 sq.m | Architecture

Our clients for this projects grew up in gardens and among big families, a spacious ground floor plan was the most important thing for them, one that will whole-heartedly welcome their big gatherings, plenty of sunlight and wonderful experiences on every floor.





Interior Design

Transforming a space into a place

We study the psychological impact spaces have on their inhabitants, and aspire to create mentally conscious designs that allow and evoke positive interactions between people



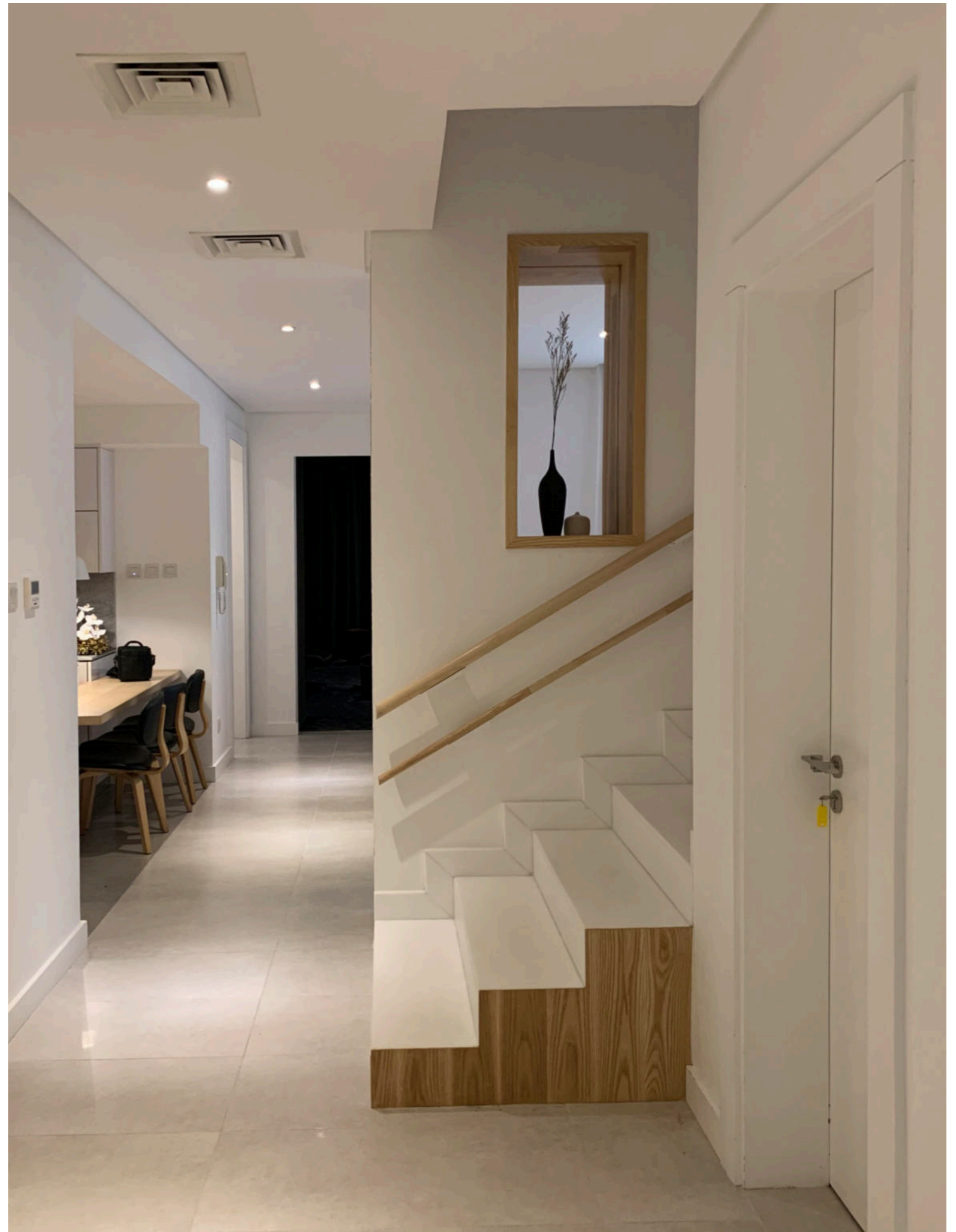
Villa Riffa Views

Bahrain | Interior Design

With minimal, yet lofty design interventions, we believe that the design of a home is a reflection of its inhabitants, hence we always pay attention to small details that are tailored to the personalities and dreams of the family.

























Introducing Community-minded approach
to workspace design



Bahrain Chamber of commerce & Industry

Office Design | Interior Design

Designing a holistic space that creates a balance between team's collaborations and the individual's privacy, within an experiential environment that brings the outside inside, in a minimal efficient setting that reflects the chamber's culture and values, allowing for collectiveness and inclusion.



Elevator lobby

Orientating visitors through materiality, clear routes and integrated signage



Service corridors

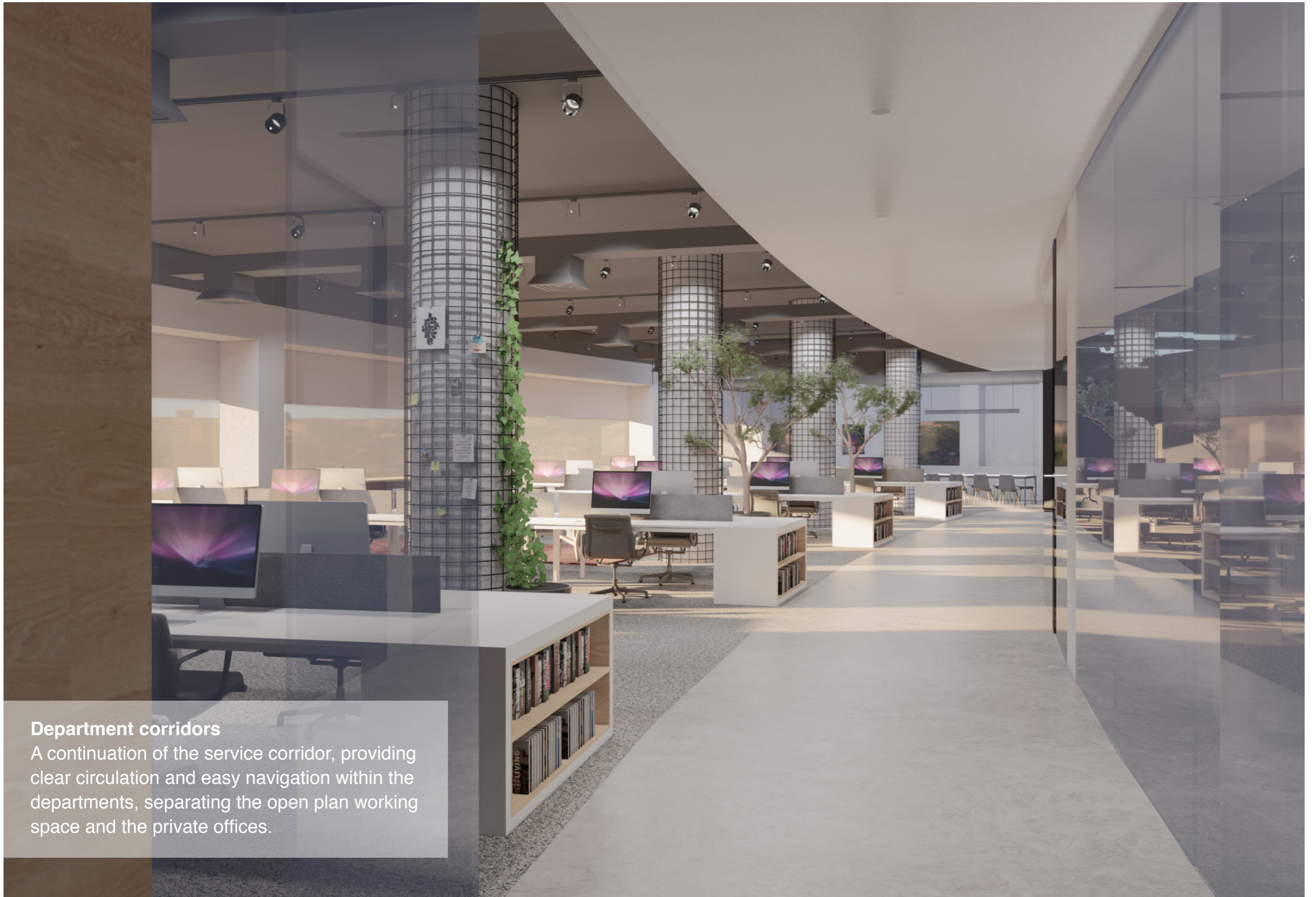
Wooden cladding (wrap around) marks the service corridors, separating it from the lobby area to the start of each department/ wing, to signify the journey and transform the long corridors into buffer zones/ transitional spaces into each department, clearly signed and branded.



Agile workplace with different Spatial Typologies
Collaborative/ meeting spaces



Agile workplace with different Spatial Typologies
Chill-out spaces



Department corridors

A continuation of the service corridor, providing clear circulation and easy navigation within the departments, separating the open plan working space and the private offices.



8 th Grade	7 th Grade	EXAMPLE OF COVER:	DETENTION:	TODAY'S DATE: Wednesday, November 9
Tpg. 184: 1-3, 8-9, 11-12, 14, Tpg. 188: 3-17 all	Tpg. 127: 1-15 odd, 17-27 odd Tpg. 134: 1-8 all		RICHARD JONATHAN ALYSSA DANIEL T. ✓ 30mins DANIEL K. ✓ 30mins DANIEL N. ✓ 30mins CINTIA SIMON ✓ 2hrs	Today's Minimum Day Schedule: Per. 1 8:50-9:30 Per. 2 8:50-9:40 Per. 3-4 9:00-10:00 Per. 5-6 10:00-11:00 P.E. 11:00-12:00 Example of an EXCELLENT Paper
Per. 3/4: NO HWK! :) (those who went to RSP, copy down the chart from page 410)	Per. 5/6: complete sketches (1-12) & finish drafting persuasive essays (#2a) *DO NOT use pencil			Today's Conferences: NONE until November 10

Agile workplace with different Spatial Typologies

Collaborative spaces





A balance between **team's collaborations** and the **individual's privacy** within an experiential environment that reflects the chamber's culture and values, allowing for collectiveness and inclusion

Agile workplace with different Spatial Typologies

Open meeting spaces





Agile workplace with different Spatial Typologies
Enclosed meeting spaces



Hope Fund office design

The Wharf - Bahrain Bay | Interior Design

A cozy, youthful, high energy work environment for Hope Fund new office at the Wharf, Bahrain Bay.

A highly inspiring team of creative, hard-working individuals and an environment that reflects them just right.















MasMardi office design

Bahrain | Interior Design

Library design for masmardi architecture office... In which, the wooden floor surface folds up wrapping itself around the room to form steps, bookshelves, table and benches...

The play on levels maximizes area usage in the small room; as the table level extends to become circulation space to allow for easier reach for higher bookshelves...







1:1 office design

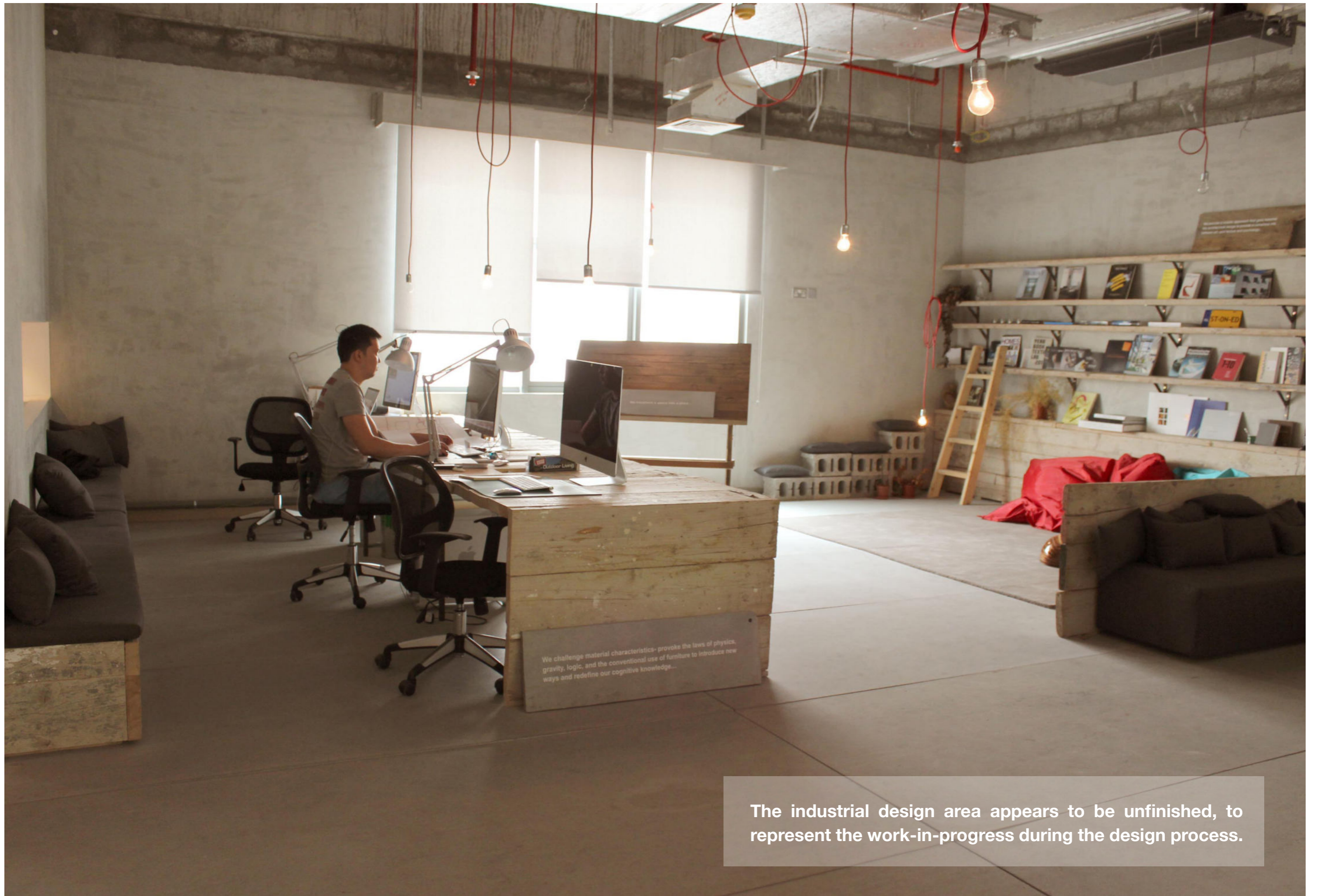
Bahrain | Interior Design

1:1 studio divided into two main parts; a minimal display area & an industrial design space. A freestanding partition separating both areas with an opening that replaces the reception, framing the designers behind and drawing attention to the contrasting design space.

The library shelves break the wall of the display area creating movement between both areas..







The industrial design area appears to be unfinished, to represent the work-in-progress during the design process.









Empower Business Solutions

Office Design | Interior Design

EmPower is an elegant Accounting and Business consulting company. The design aims to reflect minimal, professional, practical yet stylish attractive environment, designed to host meetings with the various clients; from entrepreneurs, businesspersons to working mothers.. A small Zen-Garden to define the circulation routes, and break the plain floor, bringing an organic touch to the office space.







Jumping clay Academy

Bahrain | Interior Design

Jumping Clay is an Air-dry Clay store that supplies materials, tools and workshop for children. The design goes into a typical child's drawing and brings it to life.. 3Dimensional houses and pixilated clouds stripped from their colours to be re-painted with the clay made at the academy; rain drops, flying birds, a cat jumping of the house and a dog in its doghouse, in addition to the internal clay details inside the house, wall clocks and family wall pictures... Demonstrating the infinite possibilities...



The design goes into a typical child's drawing and brings it to life..





Basta Restaurant

Bahrain | Interior Design

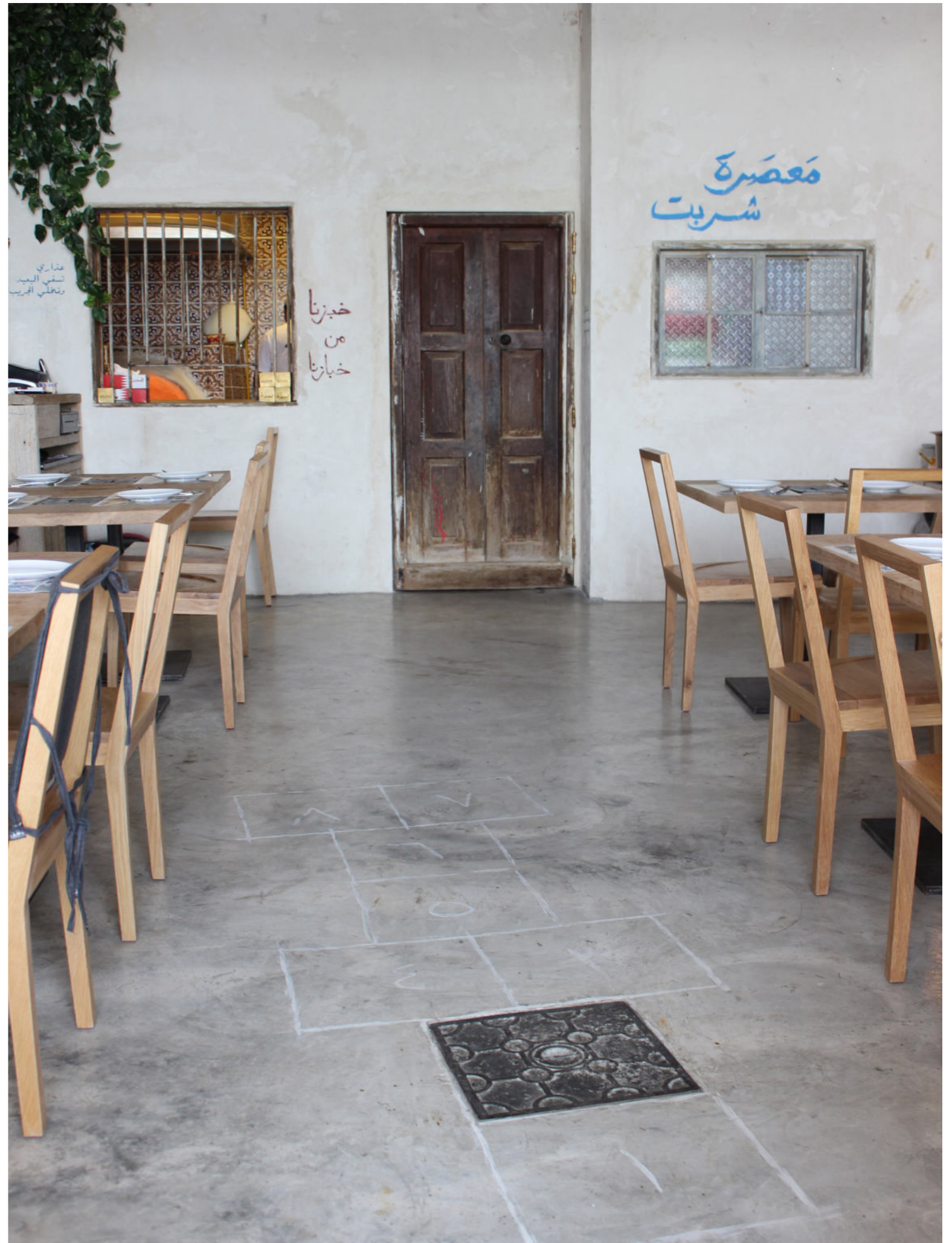
“Entering outside”, a spatially-flipped concept in which you enter into an in-between space (alley) that holds little traces of people and time.

The design extends to engage an extra sense, with a soundtrack of alley noise during the day, and another of night atmosphere. Street elements are spread through the alley-like space.. Old doors, closed windows, wall graffiti, exposed pipes, Street electricity pole with layers of adds and posters...













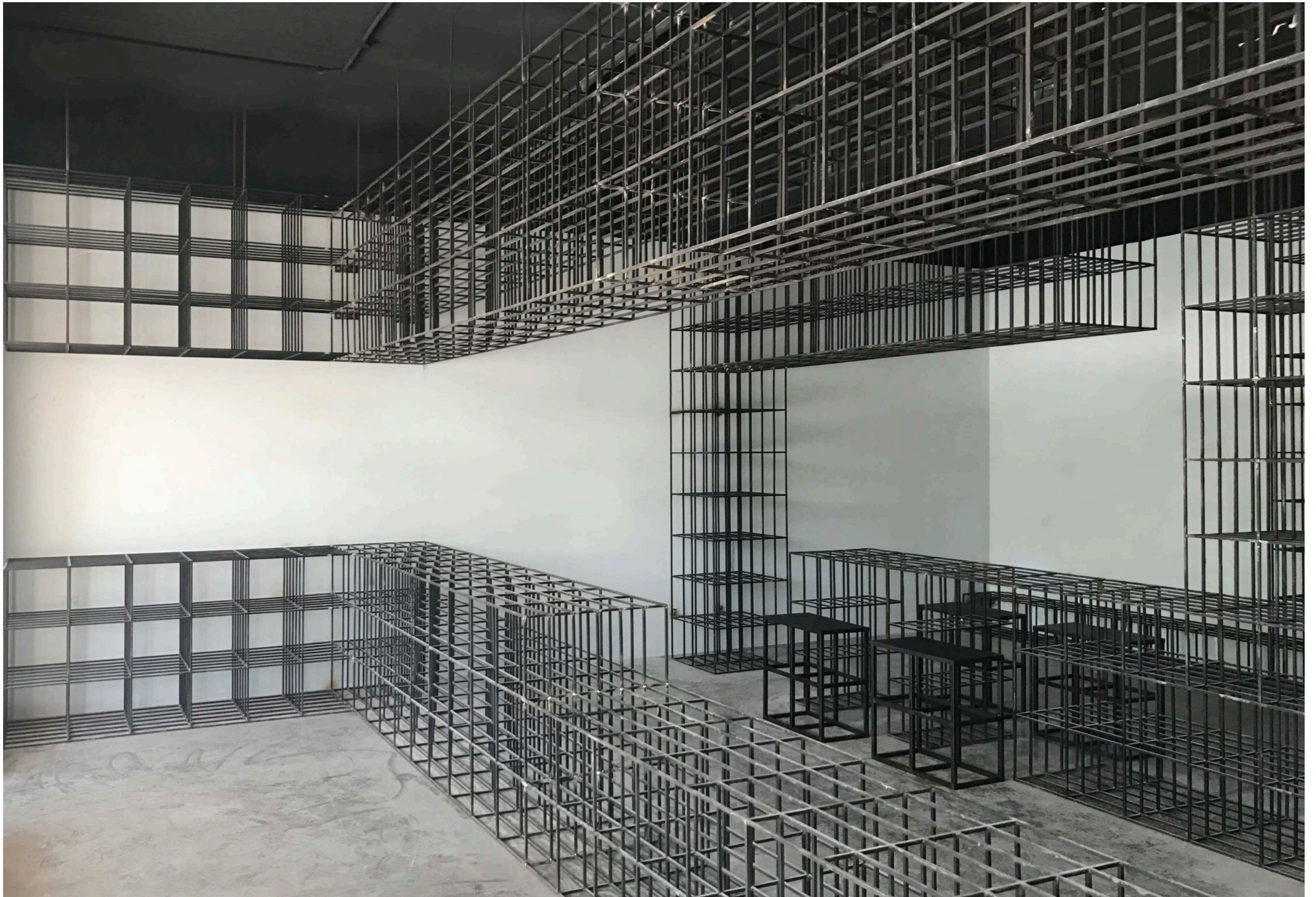


Color maze

Bahrain | Interior Design

A shop dedicated for Graffiti and street art supplies and workshops.

The design aims to create a hint of the street the art is based around. The design is an abstract industrial setting appropriate to the art form. Elements are borrowed from the context as basic materials.







Bailasan Beauty Salon

Bahrain | Interior Design

Solid wooden tops and customized details.







Ora Dental Centre

Bahrain | Interior Design

Minimal white interiors, pure, hygienic, with a clear layout.

Designed for Ora Centre, a bright, friendly and very talented team.
The ceiling is lowered to define the reception and children's waiting area.





Installations

We draw inspiration from other disciplines to create those temporary structures, pavilions, expo spaces that vary in scale and function. The design fluctuates between installation art and architecture.

We create conceptual art that aims to provoke the viewers' perception of the space, and consciousness, and engage them in a sensory experiences.



The proposed design weaves itself through the existing structure of the museum, to include the existing architecture in the event.

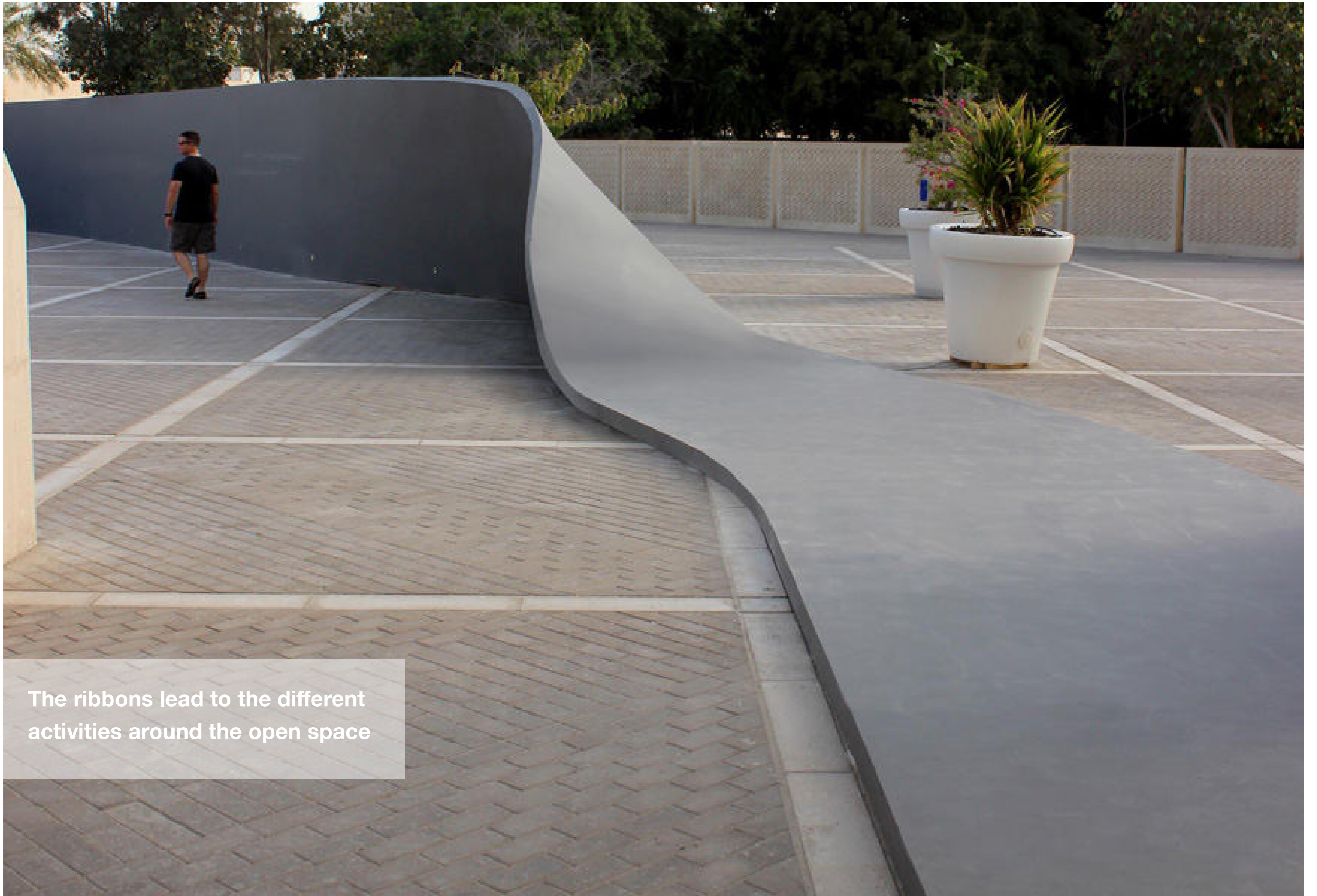
The Heritage Festival

Ministry of Culture | Bahrain National Museum

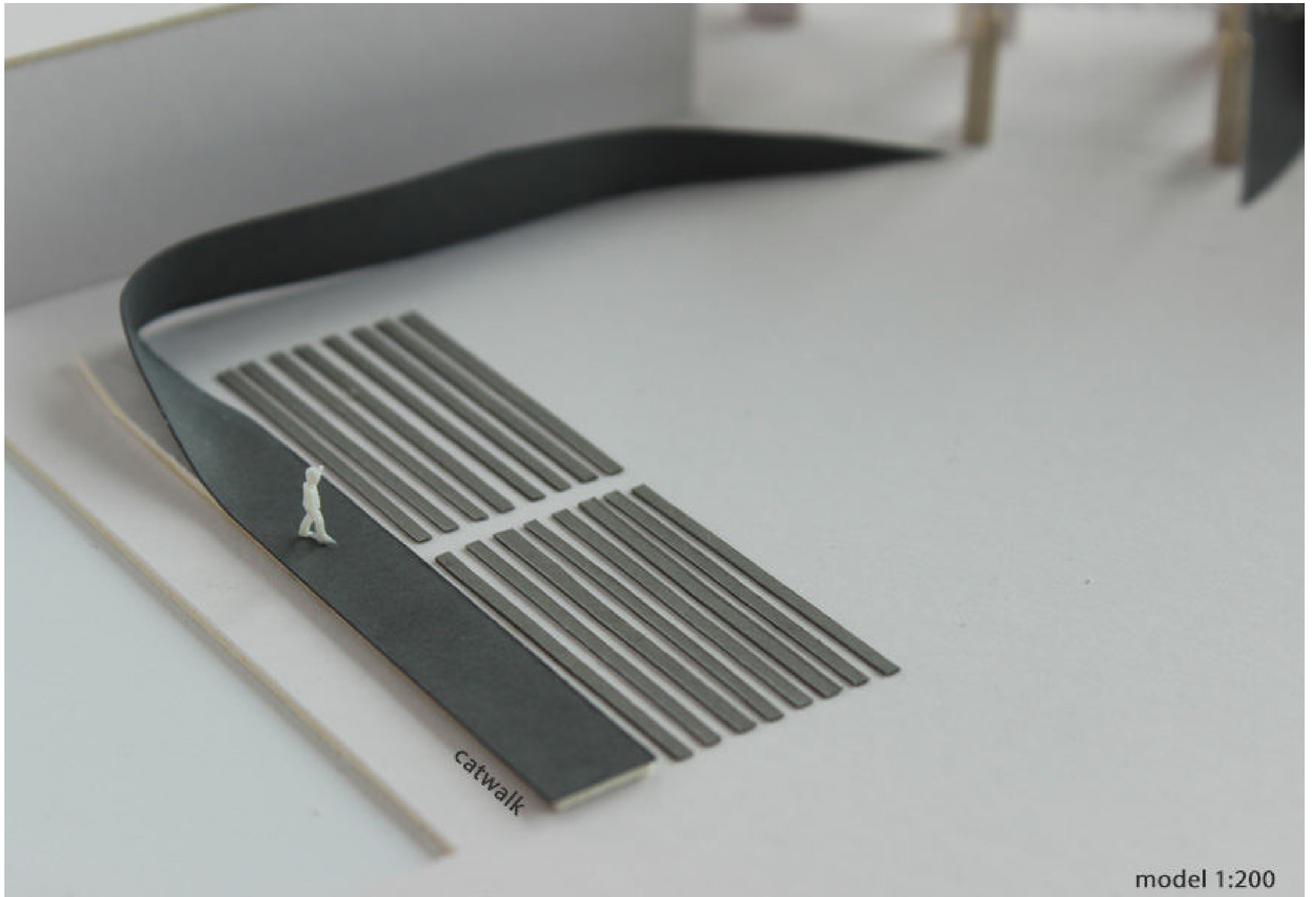
Inspired by the concept of the Heritage Festival “customs & textile”, the proposed design weaves itself through the existing structure of the museum, to include the existing architecture in the event. The ribbons lead to the different activities around the open space, weaving through the columns, creating a landscape that embeds within its folds the market stalls, the catwalk, the stage, the workshop space and even the urban furniture.







The ribbons lead to the different activities around the open space



catwalk

model 1:200



Home

Water Garden Park Sculpture
Ministry of Works | Bahrain



HOME, creates a constant dialogue between nature and the man-made. The sculpture, in its strong presence, is an abstract representation of a tree.

The birdhouses are carved into the white form to give warmth to the birds, tangible, and to us, intangibly.





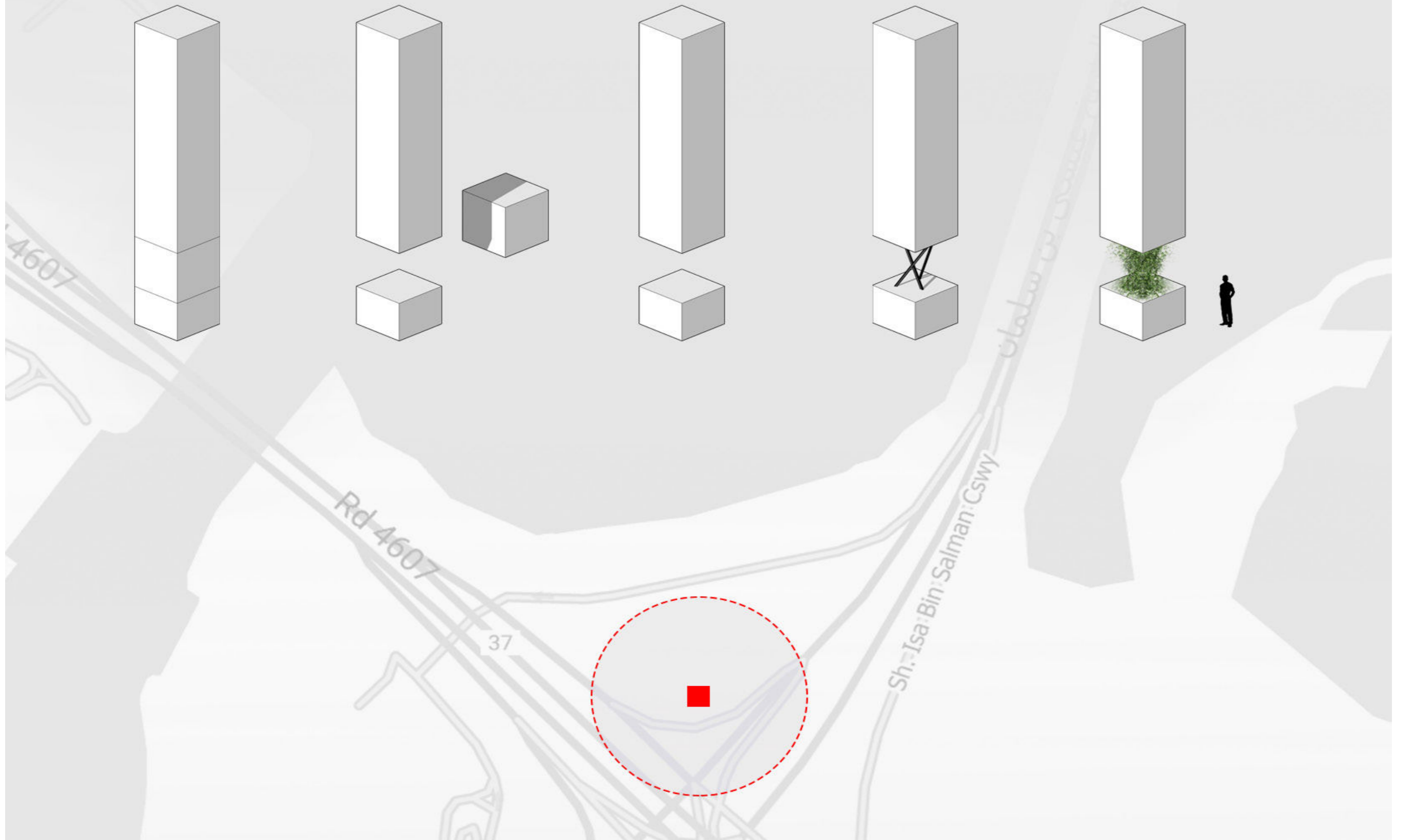


The Emblem- Monument

Bahrain society of engineers | 50th golden jubilee celebration

In its essence, engineering across time has been in the constant pursuit of the impossible. The design is hence a play on material, form and perception using fragmented geometry. The pure form is sliced to reveal frail/delicate web of plantation stretching between both masses gives the illusion of bringing the segments together despite its soft characters. The green core represents the Architecture's interdependent relationship with nature. Metaphorically, it also symbolises the Society of Engineers as it is a resilient, growing society, thriving for excellence.

The design manifests the pursuit of the impossible in the language of engineering.....







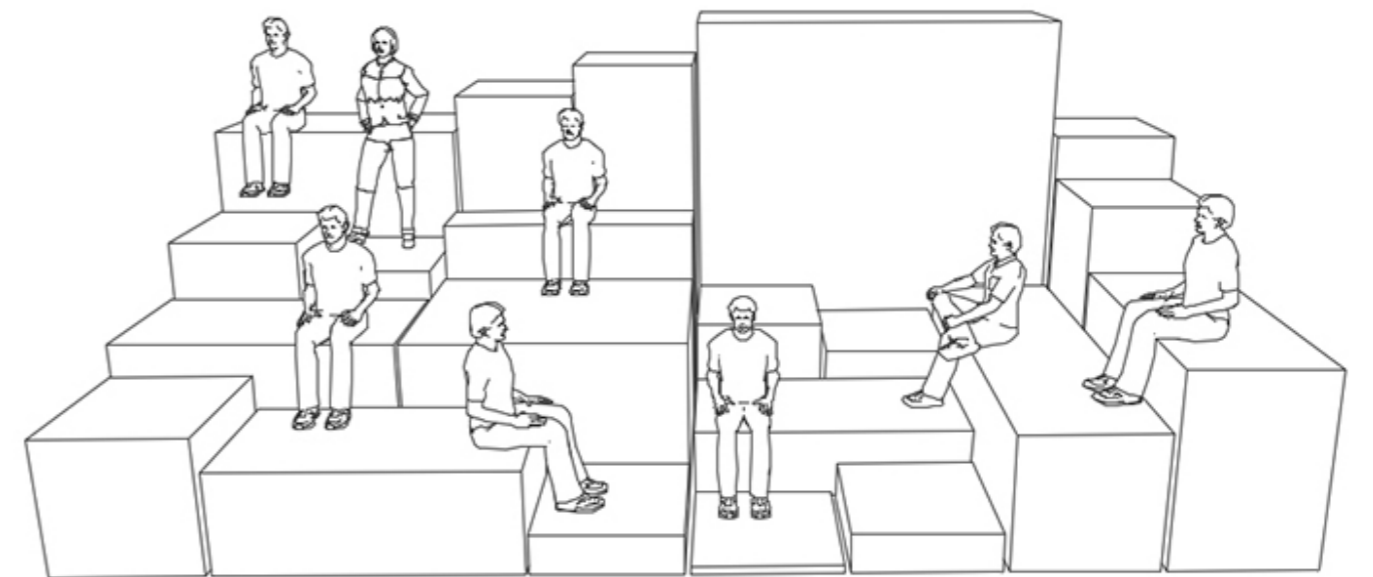
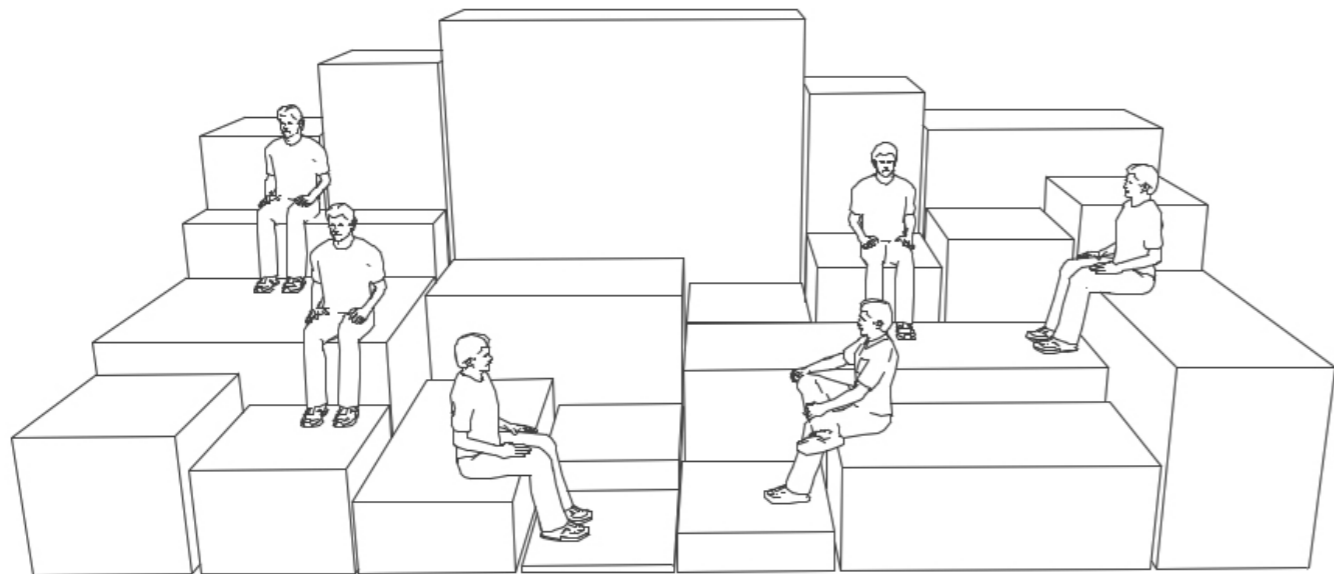
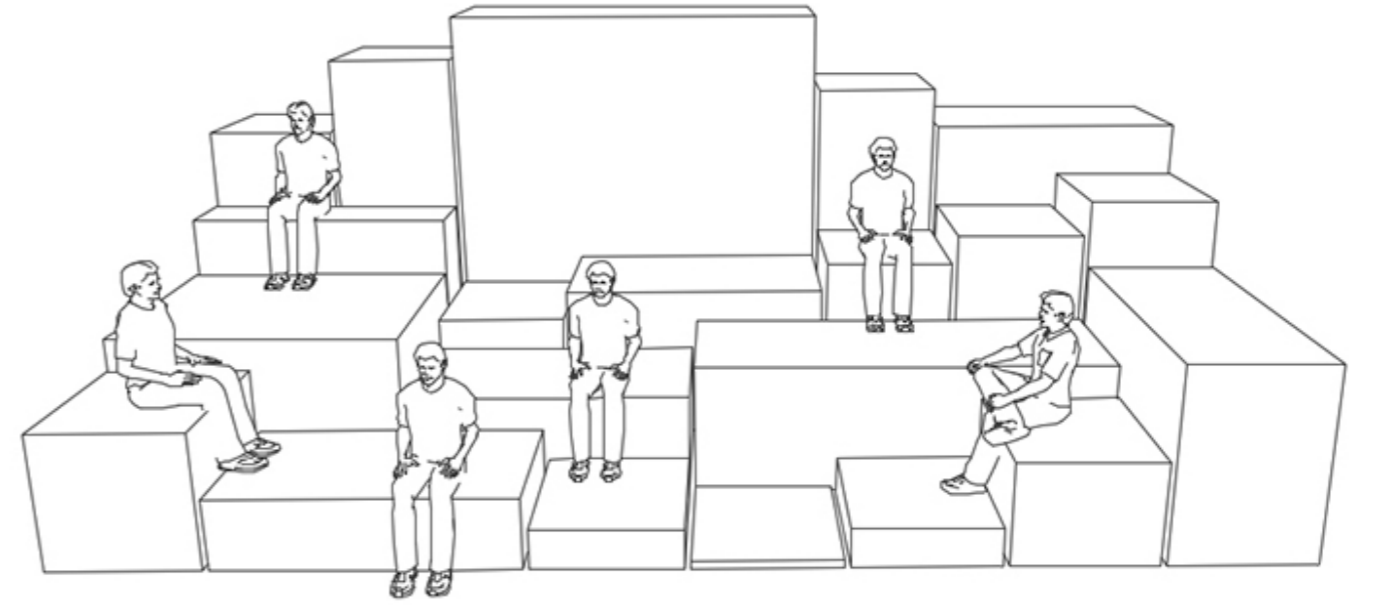
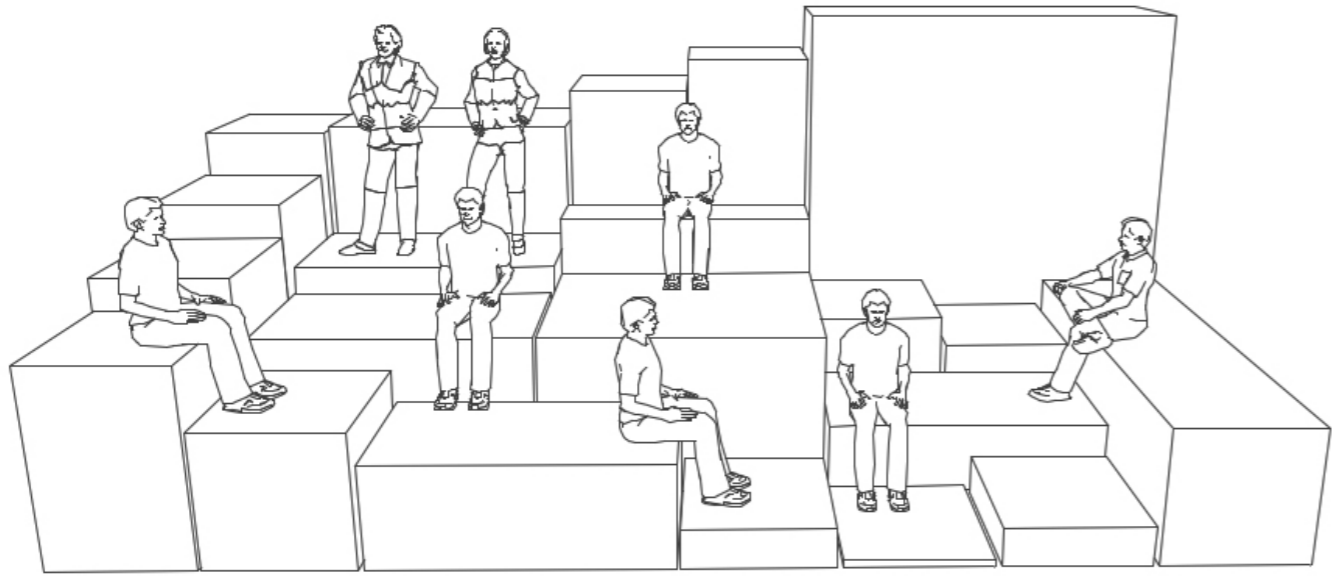
Outdoor Stage Design

Market 338 | Al Riwaq Art Space

The stage was inspired by Alwan 338s concept (common ground).

It is broken down into smaller boxes that are all similar in color and material but vary in dimensions, to form together the complete entity that holds within itself the steps, the stage, the furniture, the background and the screen...







1:1 Exhibition booth

Exhibition stand | 1:1 architecture and design

During participation at an exhibition, 1:1 presented itself with a small design booth, not only to enclose and present its products and services inside, but also to be in itself a display of its design methodology in a glimpse.



one to one architecture and design
واحد لواحد للعمارة والتصميم



Furniture

We challenge material characteristics- provoke the laws of physics, gravity, logic, and the conventional use of furniture to introduce new ways and redefine our cognitive knowledge.

We address the continuous conversation between traditional and contemporary, organic and defined, in an ongoing workshop producing pieces that are experimental, rough, casual, incomplete,



rochebobois
PARIS

1:1

FURNITURE DESIGN

Mah Jong Seat Reimagined

Collaboration with Roche Bobois | International

1:1 has been invited by Roche Bobois to have an artistic intervention to one of the iconic Mah Jong seats for a Charity exhibition and auction of the pieces. Examining the concept of layering and roots, and inspired from Nietzsche when he said "There are not beautiful surfaces without terrible depths". The White Mah Jong seat fabric opens up to reveal layers of haptic representation of the different stages through the history of the "seat" in the region.



Mah Jong Seat Reimagined | Furniture



Mah Jong Seat Reimagined | Furniture



Cabinet Talisman

Collaboration with BD Barcelona Design | Spain

“There are no beautiful surfaces without terrible depth”

Friedrich Nietzsche

The traditional Teak wood cabinet «mbayyat box» is inside a cotemporary white cabinet... The minimal white surface is drawn back- like fabric- by details from the history residing at the core, peeling time layer to reveal inevitable roots. Calligraphy by: Nedhal Nooh









Table Talisman

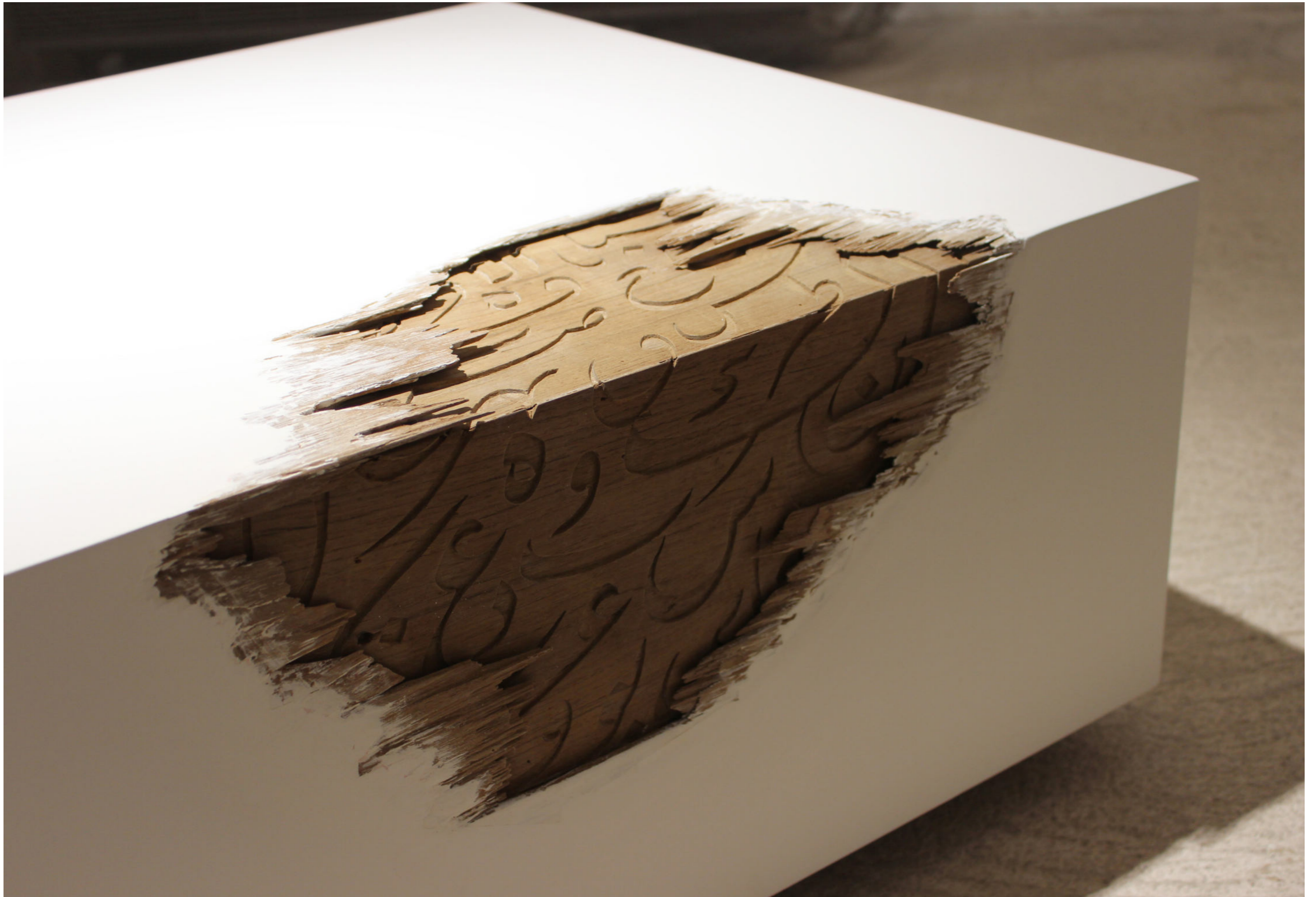
Furniture design and manufacturing | Bahrain

“There are no beautiful surfaces without terrible depth”

Friedrich Nietzsche

The contemporary paint/surface peels off revealing a more culture-related core...
A piece examining the concept of layering and roots...

Calligraphy by: Nedhal Nooh







Womb Light

Furniture design and manufacturing | Bahrain

The hand carved lights combine contradicting attributes, natural and defined, rough and polished, dark and light, in a controlled mess...

Examining the concept of layering and roots.



Womb Light | Furniture





Door Talisman

Furniture design and manufacturing | Bahrain

“There are no beautiful surfaces without terrible depth”

Friedrich Nietzsche

80 years old door inside a contemporary door...

The white paint is drawn back- like fabric- revealing the traditional core at the heart...
The folds are hand carved wood... Examining the concept of layering and roots...



